

---

# **BuzziCactus**

## **Product Specification Sheet**

---

This document contains technical information about the BuzziCactus

## Do you need privacy, quiet or protection?


The BuzziCactus is a room divider that combines no less than three factors: sound insulation, design and a surface you can stick pins onto. Thanks to the striking shape and colour you can make a statement at home or at the office. Put your BuzziCactus in direct sunlight – it deserves to be seen!

Design by BuzziSpace Studio

## General

 Gringo | Taco | TexMex

Core: honeycomb cardboard

 Filling: acoustic foam + fabric + zipper

Baseplate: powder coated metal

Fabrics: Fabric, Trevira CS+ | CS, Terra, Clara 2, Remix 2, Hero, Tonus 4, Tonus Meadow, Memory 2

 Dry use

 Flat packed

---

## Acoustics



Attenuation



Diffusion

---

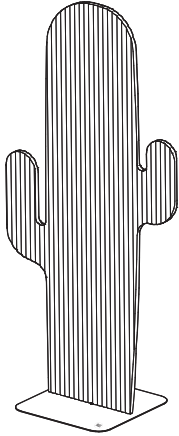
## Content

Configurations	3
Fabrics	4
Dimensions	7
Acoustics	8

# Configurations

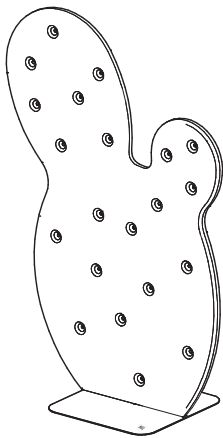
---

## BuzziCactus Gringo



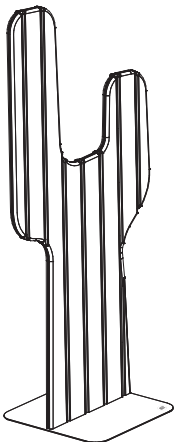
- Core: honeycomb cardboard
- 🌲 Filling: acoustic foam + fabric + zipper
- Baseplate: metal powder coated
  
- ✂ W 90 cm H 180 cm D 49 cm  
W 35.43" H 70.87" D 19.29"
  
- ⚖ Total: 12,3 kg | 27,12 lbs  
Baseplate: 5,5 kg | 12,13 lbs
  
- ... Color baseplate: Black (RAL 9005) or Alu Color (RAL 9006)  
Fabrics: Fabric, Trevira CS+ | CS, Terra, Clara 2, Remix 2, Hero, Tonus 4, Tonus Meadow, Memory 2

## BuzziCactus Taco



- Core: honeycomb cardboard
- 🌲 Filling: acoustic foam + fabric + zipper
- Baseplate: metal powder coated
  
- ✂ W 102 cm H 151,5 cm D 49 cm  
W 40.16" H 59.65" D 19.29"
  
- ⚖ Total: 13,3 kg | 29,32 lbs  
Baseplate: 5,5 kg | 12,13 lbs
  
- ... Color baseplate: Black (RAL 9005) or Alu Color (RAL 9006)  
Fabrics: Fabric, Trevira CS+ | CS, Terra, Clara 2, Remix 2, Hero, Tonus 4, Tonus Meadow, Memory 2

## BuzziCactus TexMex

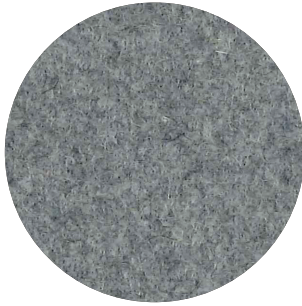


- Core: honeycomb cardboard
  - 🌲 Filling: acoustic foam + fabric + zipper
  - Baseplate: metal powder coated
  
  - ✂ W 81 cm, H 172 cm D 49 cm  
W 31.89" H 67.71" D 19.29"
  
  - ⚖ Total: 11,9 kg | 26,24 lbs  
Baseplate: 5,5 kg | 12,13 lbs
  
  - ... Color baseplate: Black (RAL 9005) or Alu Color (RAL 9006)  
Fabrics: Fabric, Trevira CS+ | CS, Terra, Clara 2, Remix 2, Hero, Tonus 4, Tonus Meadow, Memory 2
-

# Fabrics

---

## Fabric



**Category A**

**Composition** 70% Recycled Wool, 25% Recycled Polyacryl,  
5% Recycled Other Fabrics

**Weight** 405 g/m<sup>2</sup> | 11.94 oz/yd<sup>2</sup>

**Abrasion resistance** 40.000 Martindale, 50,000 Wyzenbeek

**Flammability** EU: EN 1021.1/2006 | BS EN 1021.1/2006 (cigarette).  
EN 1021.2/2006 | BS EN 1021.2/2006 (match)  
USA: CAL TB 117 | ASTM E84 CLASS A

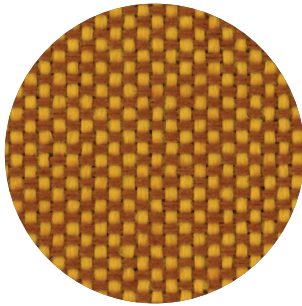
**Fastness to light** EU: 4 | USA 4

**Fastness to rubbing** EU: Wet 3-4 | Dry 4-5

**Fastness to crocking** USA: Wet 5 | Dry 5



## Trevira CS+ | CS



**Category A**

**Weight** 420 g/m<sup>2</sup> | 12.39 oz/yd<sup>2</sup>

**Composition** 100% Polyester, Trevira CS

**Abrasion resistance** 100.000 Martindale, 90,000 Wyzenbeek

**Flammability** BS 5852 part II: CRIB 5 | BS 7176 Medium Hazard  
USA: CAL TB 117 | M1 | B1 | EN 1021/1-2 | C1 |  
IMO Res. A652 (16)

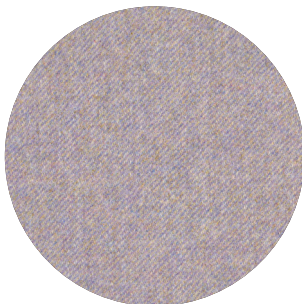
**Fastness to light** EU: 6 | USA 5

**Fastness to rubbing** EU: Wet 4-5 | Dry 4-5

**Fastness to crocking** USA: Wet 5 | Dry 5



## Terra



**Category B**

**Composition** 100% Pure New Wool

**Weight** 370 g/m<sup>2</sup> | 10.91 oz/yd<sup>2</sup>

**Abrasion resistance** 40.000 Martindale, 25,000 Wyzenbeek

**Flammability** EU: BS5852 CRIB 5 | BS5867 PART 2 : 2008 : TYPE B  
EN: 1021.2/2006 | USA: CAL TB 117

**Fastness to light** EU 5 | USA 5

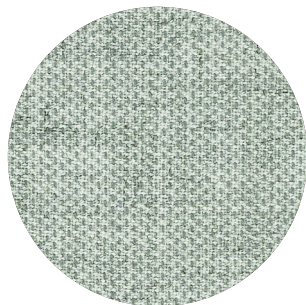
**Fastness to rubbing** EU: Wet 4 | Dry 4

**Fastness to crocking** USA: Wet 4 | Dry 4



## Clara 2

kvadrat



**Category B**

**Composition** 92% new wool, 8% nylon

**Weight** 400 g/lin.m

**Abrasion resistance** 80.000 Martindale rubs, EN ISO 12947

**Flammability** EN 1021-1/2 | BS 5852, ignition source 2-3 | DIN 4102 B2  
NF D 60 013 | UNI 9175 11M | US Cal. Tech. Bull. 117, Sec. E  
NFPA 260 | IMO A.652(16)

**Fastness to light** Note 5-7, ISO 105-B02

**Fastness to rubbing** (ISO) dry 4-5, wet 4

**Pilling** Note 4, EN ISO 12945



## Remix 2

kvadrat



**Category B**

**Composition** 90% new wool, 10% nylon

**Weight** 415 g/lin.m

**Abrasion resistance** 100.000 Martindale rubs, EN ISO 12947

**Flammability** EN 1021-1/2 | BS 5852 part 1  
Önorm B1/Q1 | NF D 60 013 | UNI 9175, 11M  
AS/NZS 1530.3 | Cal. Tech. Bull. 117-2013  
NFPA 260 | IMO FTP Code 2010:Part 8

**Fastness to light** Note 5-7, ISO 105-B02

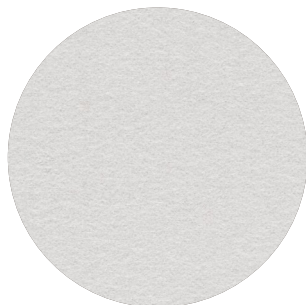
**Fastness to rubbing** (ISO) dry 4-5, wet 4

**Pilling** Note 4, EN ISO 12945



## Hero

kvadrat



**Category C**

**Composition** 96% new wool, 4% nylon

**Weight** 580 g/lin.m

**Abrasion resistance** 45.000 Martindale rubs, EN ISO 12947

**Flammability** EN 1021-1/2 | DIN 4102 B2 | NF D 60 013  
UNI 9175 11M | US Cal. Bull. 117-2013 | NFPA 260  
IMO A.652 (16)

**Fastness to light** Note 5-6, ISO 105-B02

**Fastness to rubbing** (ISO) dry 4-5, wet 4-5

**Pilling** Note 3-4, EN ISO 12945



## Tonus 4

kvadrat



**Category D**

**Composition** 90% new wool, 10% Helanca

**Weight** 665 g/lin.m

**Abrasion resistance** 100.000 Martindale rubs, EN ISO 12947

**Flammability** EN 1021-1/2 | BS 5852 part 1 | DIN 4102 B2  
Önorm B1/Q1 | NF D 60 013 | UNI 9175 11M  
US Cal. Bull. 117-2013 | NFPA 260 | IMO A.652 (16)

**Fastness to light** Note 5-7, ISO 105-B02

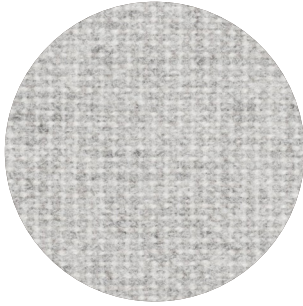
**Fastness to rubbing** (ISO) dry 3-5, wet 3-5

**Pilling** Note 3, EN ISO 12945



## Tonus Meadow

kvadrat



**Category** D

**Composition** 90% new wool, 10% Helanca

**Weight** 665 g/lin.m

**Abrasion resistance** 100.000 Martindale rubs, EN ISO 12947

**Flammability** EN 1021-1/2 | BS 5852 part 1 | DIN 4102 B2

Önorm B1/Q1 | NF D 60 013 | UNI 9175 11M

US Cal. Bull. 117-2013 | NFPA 260 | IMO A.652 (16)

**Fastness to light** Note 5-7, ISO 105-B02

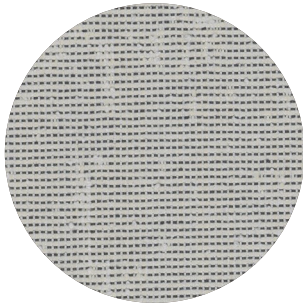
**Fastness to rubbing** (ISO) dry 4-5, wet 4

**Pilling** Note 3, EN ISO 12945



## Memory 2

kvadrat



**Category** E

**Composition** 100% Trevira CS

**Weight** 700 g/lin.m

**Abrasion resistance**

35.000 rubs acc. to the Martindale method, EN ISO 12947

**Flammability** EN 1021-1/2 | DIN 4102 B1 | Önorm B1/Q1

NF D 60 013 | NF P 92 507 M1 | UNI 9175 11M

UNI 9177 classe 1 | US Cal. Tech. Bull. 117

IMO A.652 (16)

**Fastness to light** Note 5-8, ISO 105-B02

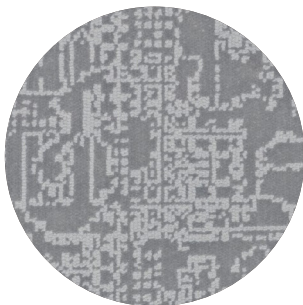
**Fastness to rubbing** (ISO) dry 4-5, wet 4-5

**Pilling** Note 4, EN ISO 12945



## Matrix

kvadrat



**Category** F

**Composition** 100% Trevira CS

**Weight** 760 g/lin.m

**Abrasion resistance**

App. 60.000 rubs acc. to the Martindale method, EN ISO 12947

**Flammability** EN 1021-1/2 | BS 5852 crib 5 | BS 5867 part 2 type B

DIN 4102 B1 | Önorm B1/Q1 | NF D 60 013

UNI 9175 11M | US Cal. Tech. Bull. 117 | NFPA 701

IMO A.652 (16)

**Fastness to light** Note 5-7, ISO 105-B02

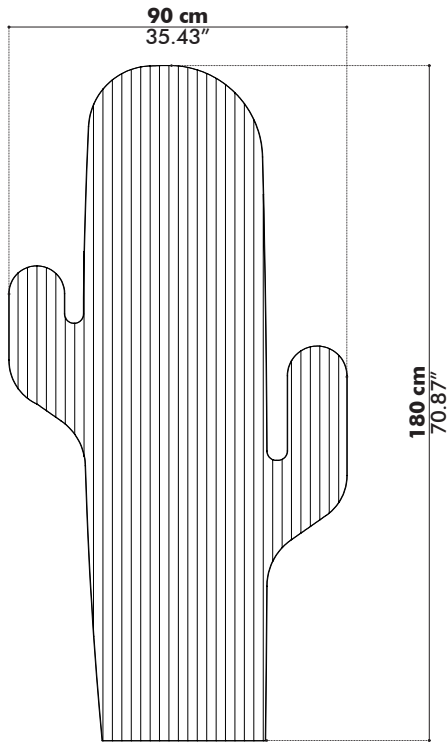
**Fastness to rubbing** (ISO) dry 4-5, wet 4-5

**Pilling** Note 4, EN ISO 12945

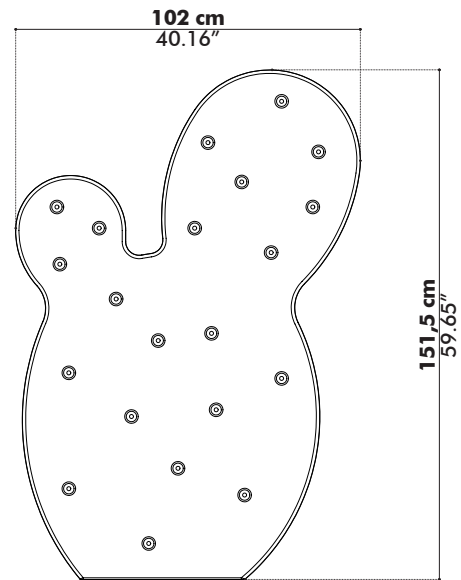


# Dimensions

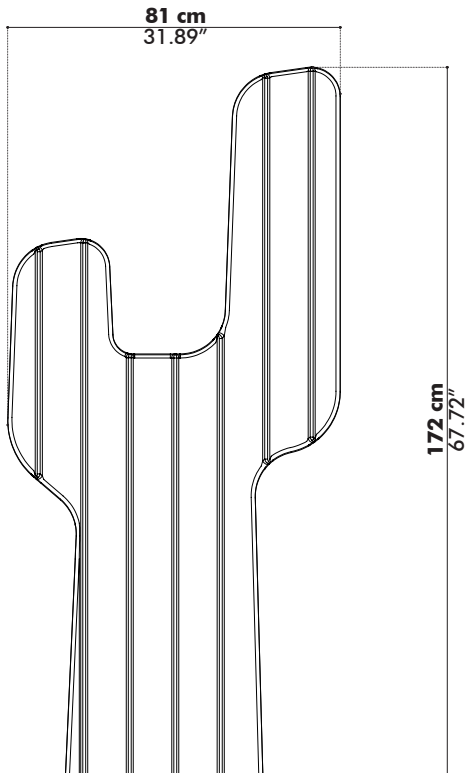
## BuzziCactus Gringo



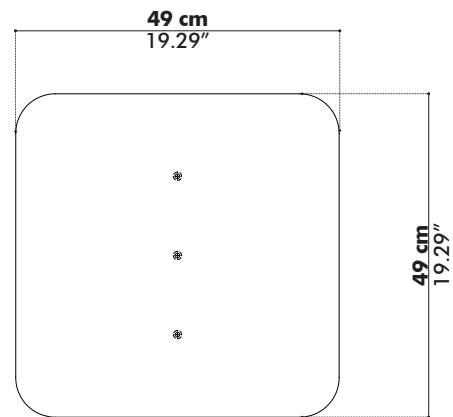
## BuzziCactus Taco



## BuzziCactus TexMex



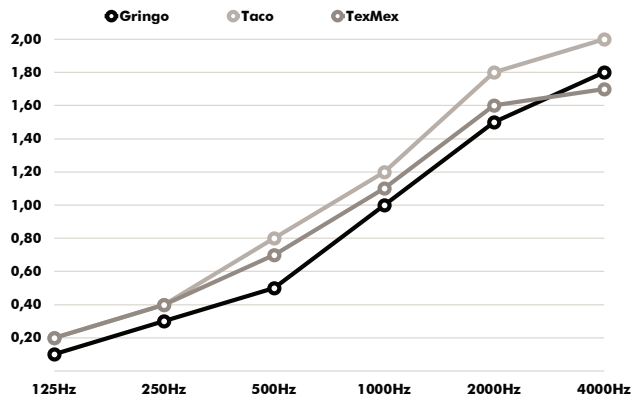
## BuzziCactus Baseplate



# Acoustics

## BuzziCactus

Equivalent sound absorption area in m<sup>2</sup> per object



Hz	Gringo Aeq/m <sup>2</sup>	Taco Aeq/m <sup>2</sup>	TexMex Aeq/m <sup>2</sup>
125	0.10	0.20	0.20
250	0.30	0.40	0.40
500	0.50	0.80	0.70
1000	1.00	1.20	1.10
2000	1.50	1.80	1.60
4000	1.80	2.00	1.70